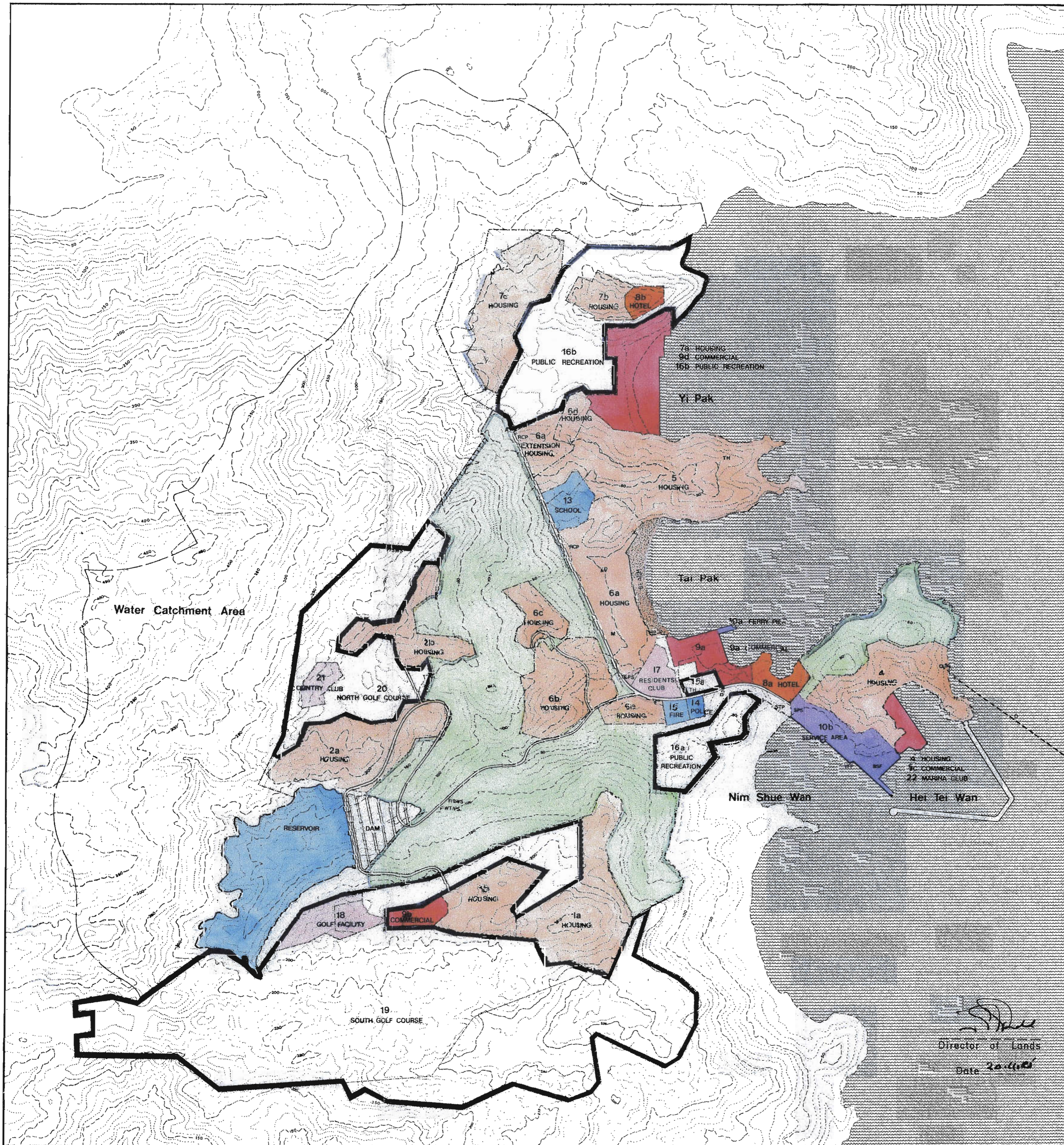


DISCOVERY BAY MASTER PLAN 5.2

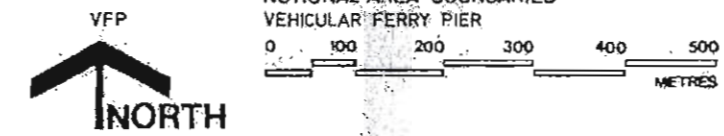


LOT NO.	NO. OF UNITS	GROSS BLDG. AREA (m ²)	GROSS SITE AREA (m ²)	PLOT RATIO
A HOUSING ACCOMMODATIONS				
1a/1b	500	46,330	175,652	0.27
2a	300	54,000	60,800	0.89
2b	180	32,000	47,775	0.67
4	650	60,000	80,650	0.74
5	459	71,831	199,920	0.36
6a	432	51,942	93,400	0.56
6a Ext.	504	30,513	22,940	1.33
6b	643	48,440	78,460	0.62
6c	381	38,882	29,448	1.32
6d	80	9,500	13,120	0.72
6e	378	24,582	20,400	1.20
7a	200	18,000	27,449	0.66
7b	180	18,000	26,050	0.70
7c	200	20,000	89,850	0.22
SUB-TOTAL	5,087	524,000	965,914	
B COMMERCIAL				
9a		14,000	26,400	0.53
9b		1,000	(5,000)	0.20
9c		5,000	(8,500)	0.59
9d		10,000	(10,465)	0.96
SUB-TOTAL		30,000	26,400	
C HOTEL				
8a	350	28,000	15,600	1.79
8b	350	25,000	13,400	1.79
SUB-TOTAL		53,000	29,000	
A + B + C SUB-TOTAL				
		607,000	1,021,314	
D PUBLIC WORKS				
10a	PASSENGER PIER	2,500	2,900	0.86
10b	SERVICE AREA	8,010	17,800	0.49
	GODOWNS	3,710	-	-
	STAFF QUARTERS	1,800	-	-
	BUS DEPOT	500	-	-
	REFUSE COLLECTION CENTRE	1,000	-	-
	LPG STORAGE	500	-	-
TE	TELEPHONE EXCHANGE	700	-	-
E	ELECTRIC SUB STATION	2,050	-	-
PS	PUMPING STATIONS	4,385	-	-
DGS	DG/LPG STORES	330	-	-
M	MANAGEMENT OFFICES	3,000	-	-
STP	SEWAGE TREATMENT PLANT	1,000	-	-
RCP	REFUSE COLLECTION POINTS	2,500	-	-
BSF	BOAT SERVICING FACILITIES	1,100	-	-
		24,875	20,700	
E COMMUNITY FACILITIES				
13	SCHOOL	15,000	25,075	0.59
14	POLICE	1,500	11,300	0.27
15	FIRE	1,540	-	-
SUB-TOTAL		18,040	36,375	
F RECREATION				
16a/b	PUBLIC RECREATION	30,000	295,368	-
17	RESIDENTS CLUB	2,000	22,700	0.09
18	GOLF CLUB	5,500	28,750	0.19
19	SOUTH GOLF COURSE	-	963,260	-
20	NORTH GOLF COURSE	-	227,750	-
21	COUNTRY CLUB	5,500	15,500	0.35
22	MARINA CLUB	5,500	88,850	0.06
SUB-TOTAL		48,500	1,642,168	-
GRAND TOTAL		698,415	2,720,557	-

LEGEND

TH	TEMPORARY HELIPAD	MINIMUM ASSOCIATED FACILITIES
STP	SEWAGE TREATMENT PLANT	8 HOTEL
FWT	FRESH WATER TREATMENT	F/SWS, FWT SALT/FRESH WATER STORAGE AND TREATMENT AREA
SWS	SALT WATER STORAGE	STP SEWAGE TREATMENT PLANT
FWS	FRESH WATER STORAGE	10 FERRY PIER
SO	SEWAGE OUTFALL	- DAM AND RESERVOIR
WPS	WATER PUMPING STATION	
---	SITE BOUNDARY	
---	PLANNING BOUNDARY	
---	NOTIONAL AREA BOUNDARIES	
---	VEHICULAR FERRY PIER	

Director of Lands
Date 20/10/02



HONG KONG RESORT CO. LTD.
CHAIRMAN CHA CHI MING

OCTOBER 1985